

NAVITEK BG-200 – Bluetooth Pairing (i-Mate)

# NAVITEK

## Bluetooth GPS Receiver Model: BG-200

PDA Bluetooth Pairing (i-Mate)

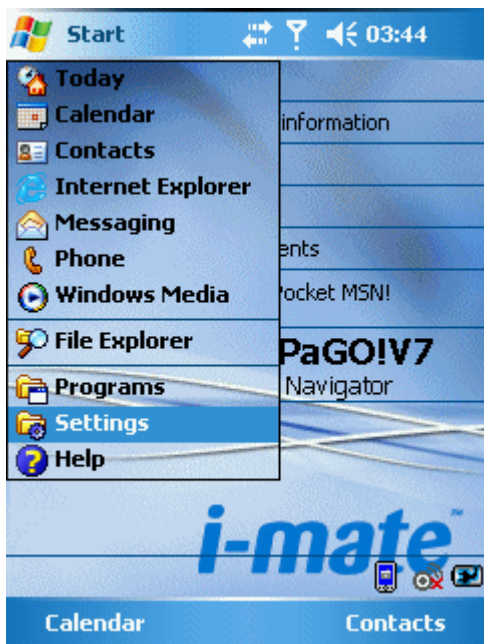


**PDA Model:** i-Mate JAMin  
**OS:** Windows Mobile 5

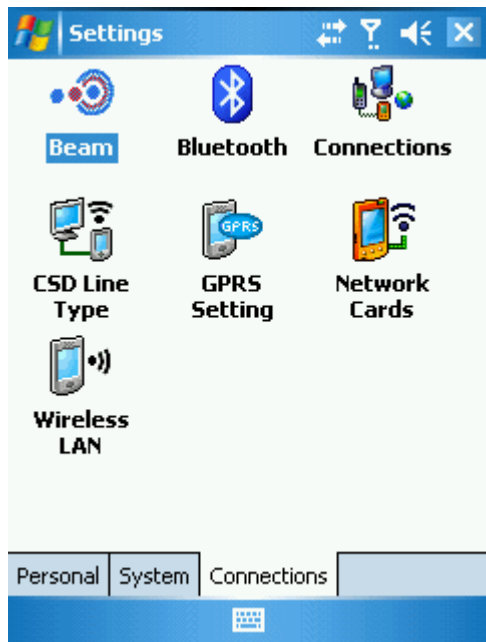




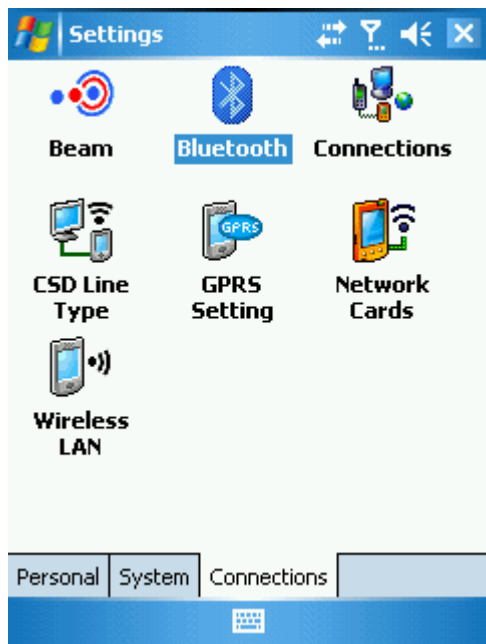
i-mate JAMin's  
Today screen,  
please consult  
**START** menu



Select the  
**SETTINGS**  
command



Select the  
**CONNECTIONS**  
tab



Select the  
**BLUETOOTH**  
icon



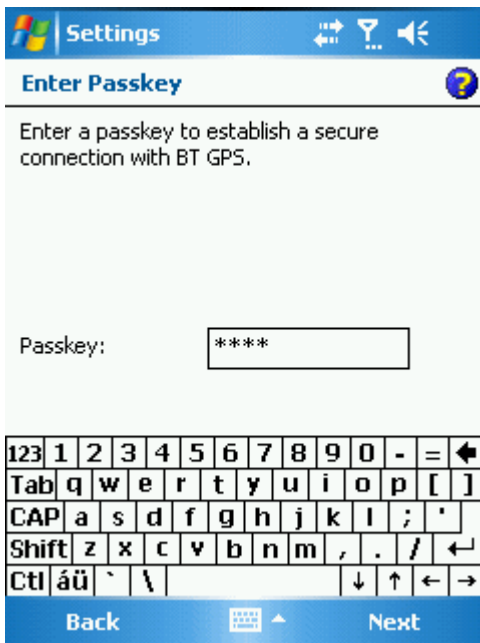
Tick on the  
**Turn on Bluetooth**  
then tap on the  
**DEVICES**  
tab



Select the  
**NEW**  
**PARTNERSHIP**  
command



Select your  
**BT GPS**



Enter the  
**PASSKEY**  
"0000"

"Zero Zero Zero Zero"





Active the

**SERIAL PORT**

services



The Pairing is done,

a connection will be

done automatically,

now tap on the

**COM PORTS**

tab

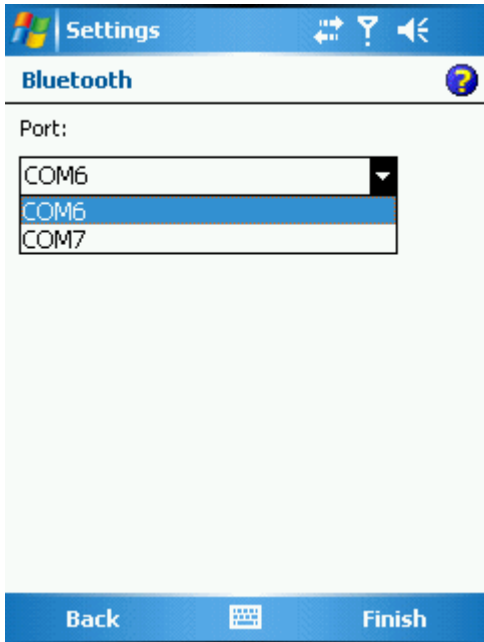




Select the **NEW  
OUTGOING PORT**  
command



Select your  
**BT GPS**



Select the  
**COM PORT**  
"YOU CAN  
CHOOSE ANY  
PORT"



Select the  
**COM7**



An **OUT GOING**  
**COM PORT**

has been created

**ALL DONE!**

